

# Display Settings for Your Monitors

When you dock your Surface you will have options for display that include using your Surface as a second monitor.



## Mirrored Displays

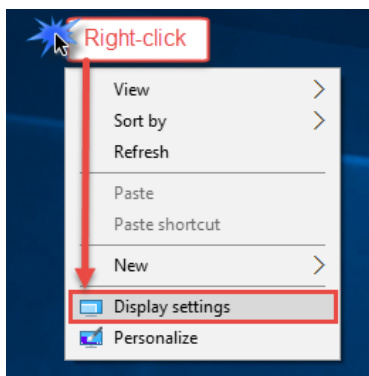
You can choose to mirror, or duplicate, your desktop on your Surface and your large monitor. A mirrored desktop is useful for connecting to a projector for classroom display. What is seen on your screen, is what students see on the display screen.



## Extended Displays

When you want to increase your desktop area, you can extend your desktop across all displays, so that you can move program windows back and forth between the different displays. For example, you can use Microsoft Office OneNote to take notes on your mobile PC while presenting information to colleagues on an external display that everyone can see.

## Choosing Your Display Options



Right click on your desktop and choose **Display settings**.

In the **Customize your display** window, you will see three rectangles representing your three display options: Surface screen, monitor screen and projected screen. You can click on each of these numbered rectangles at the top of the screen to make changes to the

specific display.

1. Click **Identify** to have the numbers 1, 2 and 3 show up on the screens so you know which monitor is which.
2. Choose **Extend these displays** or **Duplicate these displays**.  
*Note: You may need to extend all displays before you can click on the screen you want to duplicate with your projected display.*
3. Click **Apply** to see how your setting changes affect your displays

A suggested mode is to keep your Surface screen separate from your large monitor and projector. You can duplicate on two available screens, and extend to the third.

When you are satisfied with your options, close the **Customize your display** window.

